



**MOSQUITO and VECTOR MANAGEMENT DISTRICT  
of SANTA BARBARA COUNTY**

**DISEASE SURVEILLANCE REPORT**

**July 2023**

**Santa Barbara County Vector-borne Disease Surveillance**

Santa Barbara County had no dead bird reports in July 2023. To date, there has been no WNV activity in the County in 2023. St. Louis encephalitis virus and Western equine encephalitis virus have never been documented.

<b>Location</b>	<b>Date</b>	<b>Number of Mosquitoes</b>	<b>Type of Trap</b>	<b># of Traps</b>	<b>Mosquitoes per Trap Night</b>	<b>Pools Submitted</b>	<b>WSW Virus Test Result</b>
Atascadero Creek, Goleta	7/11-7/12	81	EVS	12	6.75	2	Negative
UCSB/SBAir Bluffs	7/13-7/14	364	EVS	12	30.3	5	Negative
Santa Monica Creek, Carpinteria	7/20-7/21	3	EVS	4	0.75	0	--
Franklin Creek, Carpinteria	7/20-7/21	1	EVS	2	0.5	0	--
Craven's Lane, Carpinteria	7/20-7/21	84	EVS	1	84	2	Negative
Carpinteria Creek	7/20-7/21	1	EVS	4	0.25	0	---
Carpinteria Creek	7/19-7/21	14	Gravid	3	4.7	3	Negative
Lake Los Carneros	7/25-7/26	200	EVS	11	18.2	3	Negative
Lake Los Carneros	7/25-7/27	76	Gravid	4	19	2	Negative
Jalama State Beach	7/27-7/28	25	EVS	3	8.3	1	Negative
Gaviota State Beach	7/27-7/28	11	EVS	3	5.5	0	--
El Capitan State Beach	7/27-7/28	2	EVS	3	0.7	0	--
Refugio State Beach	7/27-7/28	0	EVS	3	0	0	--
Crescent Ave., 93105	Entire month	1	BGS2	3	0.03	0	--
Chino St., 93101	Entire month	0	BGS2	1	0	0	--
Bailard Ave, Carpinteria	Entire month	0	BGS2	1	0	0	--
MVMD, Summerland	Entire month	1	BGS2	1	0.03	0	--

BGS2=Biogents Sentinel 2      BGP=Biogents Pro      EVS=enkephalitis surveillance trap (CO<sup>2</sup>)

WSW=West Nile Virus, St. Louis Encephalitis Virus, AND Western Equine Encephalitis

\*Color indicates the virus-transmitting ability of some or all of the mosquito species caught in the traps:

Purple = high (example: *Aedes aegypti*, *Culex tarsalis*); Aqua = moderate; Tan = low. For specific trap collection data, please email a request to: [info@mvmdistrict.org](mailto:info@mvmdistrict.org)

## California Disease Surveillance

California's West Nile and St. Louis encephalitis virus numbers are climbing. As of August 1, WNV has been found in 31 counties. SLE has been detected in nine CA counties this year; one human case was reported last month in Kern County.

### CALIFORNIA



8

HUMAN CASES



147

DEAD BIRDS



1,225

MOSQUITO  
SAMPLES



13

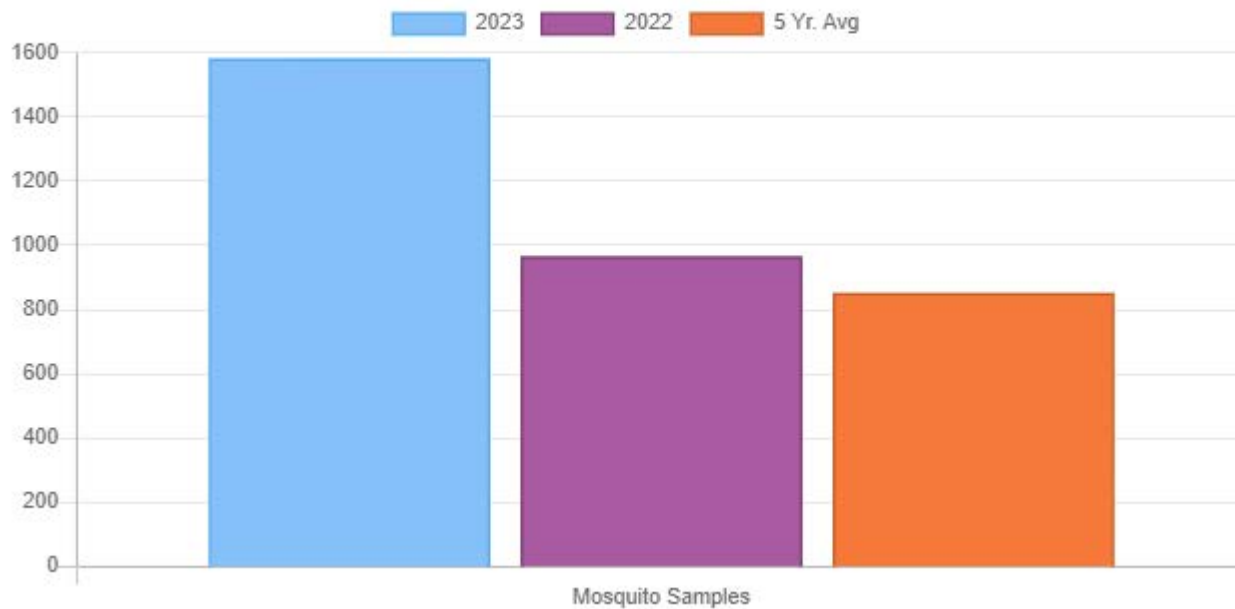
SENTINEL  
CHICKENS



1

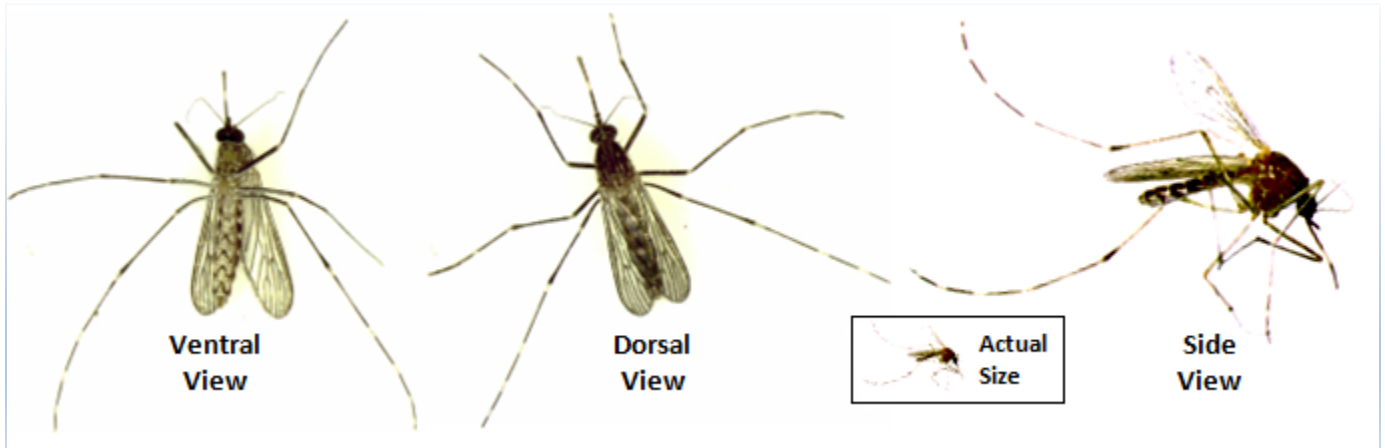
HORSES

WEEK 1 - WEEK 31 AS OF AUG 04, 2023



### Invasive *Aedes* Mosquito and Zika Virus Update

No invasive *Aedes* species have been detected in Santa Barbara County since May of 2021. No mosquito larvae were present in any of the six *Aedes aegypti*-targeting In2Care stations. *Aedes aegypti* are found in 25 California counties, and *Aedes albopictus* is found in five.



Kenny Learned

## *Culex tarsalis*--Western Encephalitis Mosquito

*Culex tarsalis* is the most widespread mosquito in California, found in all counties at elevations from below sea level to 10,000 feet. Egg rafts consisting of about 190 eggs are laid on the surface of a very wide variety of water sources. In Santa Barbara County, this species is common at Evergreen Park, around the Goleta Slough, and in many of our creeks. Females are dusk and night feeders that prefer birds, especially during nesting season, and mammals, including humans. They have been known to travel up to 15 miles from their breeding grounds to feed. The Western encephalitis mosquito is the primary vector of West Nile virus, St. Louis encephalitis virus, and Western equine encephalitis virus in California. *Culex tarsalis* has accounted for 20 out of the 26 mosquito pools that have tested positive for WNV in Santa Barbara County since 2003.



© 2006 Ed Johnson



Photo Credit: Jessica Keen  
Ocean County Mosquito Commission, NJ

*Culex* egg raft and newly-hatched larvae

