



**MOSQUITO and VECTOR MANAGEMENT DISTRICT
of SANTA BARBARA COUNTY**

DISEASE SURVEILLANCE REPORT

January 2021

Live Mosquito-Borne Virus Surveillance

Encephalitis virus surveillance will resume in March. No additional *Aedes aegypti* were detected.

Location	Date	Number of Mosquitoes	Type of Trap	# of Traps	Mosquitoes per Trap Night	Pools Submitted	WSW Virus Test Result
Valerio St.	1/15-1/21	1	BGS2	1	0.16	0	
Orella St.	1/15-1/21	1	BGS1	1	0.16	0	
Chino St.	1/15-1/21	1	BGS2	1	0.16	0	
Crescent Dr.	1/15-1/21	1	BGS2	1	0.16	0	
Center Ave.	1/15-1/21	0	BGS2	1	0	0	
MVMD Summerland	1/15-1/21	0	BGS2	1	0	0	

BGS2=BioGents Sentinel 2

BGS1=BioGents Sentinel 1

WSW=WNV, SLEV, AND WEE

West Nile Virus Activity

No West Nile virus activity has been reported by the California Department of Public Health in 2021.

Sentinel Chicken Flocks

The District currently maintains four sentinel chicken flocks in Santa Barbara County located at the Goleta Sanitary District, Mission Hills Community Services District, the Solvang City Wastewater Treatment Plant, and the U.S. Forest Service Fire Station in Carpinteria. Blood samples were collected from these chickens during the week of January 4, and all tested negative for the presence of WNV, SLEV, and WEE. From November through March, chickens are tested only once every four weeks.

St. Louis Encephalitis Virus Activity

No SLEV activity has been detected in California in 2021 to date.

Western Equine Encephalitis

There was no reportable WEE activity in California in January.

Zika Virus and Invasive *Aedes* Mosquito Update

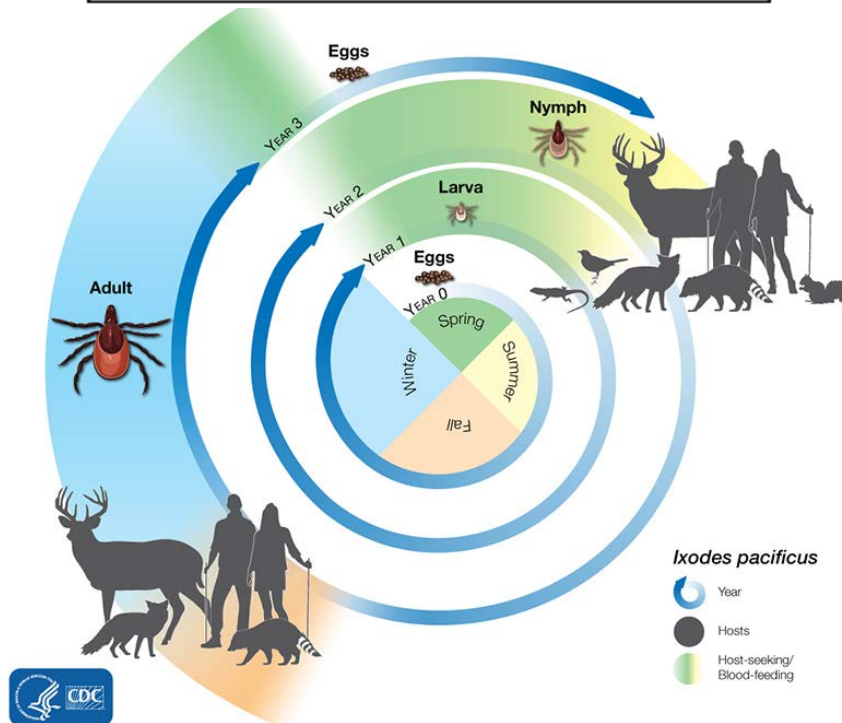
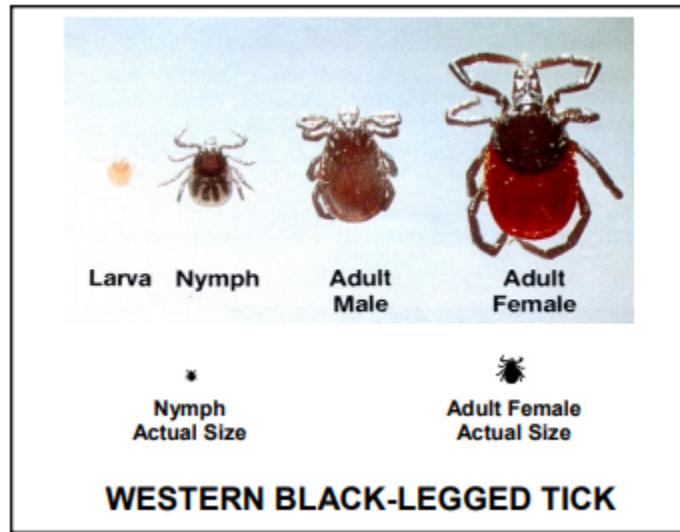
No *Aedes aegypti* mosquitoes have been collected in Santa Barbara County in 2021.

There were no Zika virus infections reported in California in January 2021.

Tick Surveillance--January 26, 2021

All ticks collected were adult stage. Specimens will be preserved in resin blocks for public outreach use.

	Western Black-Legged Tick	Pacific Coast Tick
Franklin Trail, Carpinteria	3 females, 3 males	2 females, 1 male
San Marcos Foothills	1 male	1 female, 1 male



Western Black-Legged Tick *Ixodes pacificus*

Members of the public are often surprised to see staff collecting ticks during late fall and winter, but that is the time in California to find adult ticks questing for their final host, mating, and laying eggs. *Ixodes pacificus* is the local vector of *Borrelia burgdorferi*, the spirochete bacteria that causes Lyme disease. Both male and female ticks feed on blood. Western black-legged ticks feed on one host during each life stage (larva, nymph, and adult). After feeding, larvae and nymphs drop off of the host and molt; adult ticks feed and mate on the host before the female drops off to lay up to 3,000 eggs.

PBS has a great video on how ticks penetrate our skin at https://www.youtube.com/watch?v=_IoJu2_FKE