



**MOSQUITO and VECTOR MANAGEMENT DISTRICT
of SANTA BARBARA COUNTY**

DISEASE SURVEILLANCE REPORT

October 2025

Santa Barbara County Vector-borne Disease Surveillance

Location	Date	Number of Mosquitoes	Type of Trap	# of Traps	Mosquitoes per Trap Night	Pools Submitted	WSW* Virus Test Result
UCSB/SBAIR Bluffs	10/2-10/3	18	EVS	10	1.8	3	Negative
UCSB/SBAIR Bluffs	10/2-10/3	19	Gravid	3	6.3	1	Negative
El Estero Wastewater Treatment Plant, 93101	10/9-10/10	3	EVS	4	0.75	1	Negative
El Estero Wastewater Treatment Plant, 93101	10/9-10/10	1	Gravid	1	1	1	Negative
Andree Clark Bird Refuge, 93103	10/9-10/10	4	EVS	4	1	2	Negative
Andree Clark Bird Refuge, 93103	10/9-10/10	54	Gravid	2	27	2	Negative
Lake Los Carneros	10/16-10/17	10	EVS	6	1.7	0	--
Evergreen Park, Goleta	10/16-10/17	5	EVS	3	1.7	1	Negative
Evergreen Park, Goleta	10/16-10/17	9	Gravid	1	9	1	Negative
Bella Vista Park, Goleta	10/16-10/17	7	Gravid	1	7	1	Negative
Crescent Drive, 93105	10/22-10/24	74	Gravid	3	12.4	3	Negative
Bradley Channel, Santa Maria	10/23-10/24	1	EVS	3	0.3	1	Negative
Lake Marie, Santa Maria	10/23-10/24	88	EVS	3	29.3	2	Negative
Orcutt Creek	10/23-10/24	2	EVS	6	0.3	0	--
Painted Cave, 93105	10/28-10/29	7	70 Black Flies EVS	8	0.9	0	--
UCSB/SBAIR Bluffs	10/30-10/31	12	EVS	8	1.5	2	Negative
UCSB/SBAIR Bluffs	10/29-10/31	62	Gravid	2	15.5	3	Negative
Storke Ranch, Goleta	10/30-10/31	5	EVS	3	1.7	1	Negative
Storke Ranch, Goleta	10/29-10/31	16	Gravid	1	8	1	Negative

BGS2=Biogents Sentinel 2; BGP=Biogents Pro; EVS=enkephalitis surveillance trap (CO²)

*WSW=West Nile, St. Louis Encephalitis, AND Western Equine Encephalitis

**Color indicates the virus-transmitting ability of some or all of the mosquito species caught in the traps:

Purple = high (example: *Aedes aegypti*, *Culex tarsalis*); Aqua = moderate; Tan = low.

For specific trap collection data, please email a request to: info@mvmdistrict.org.

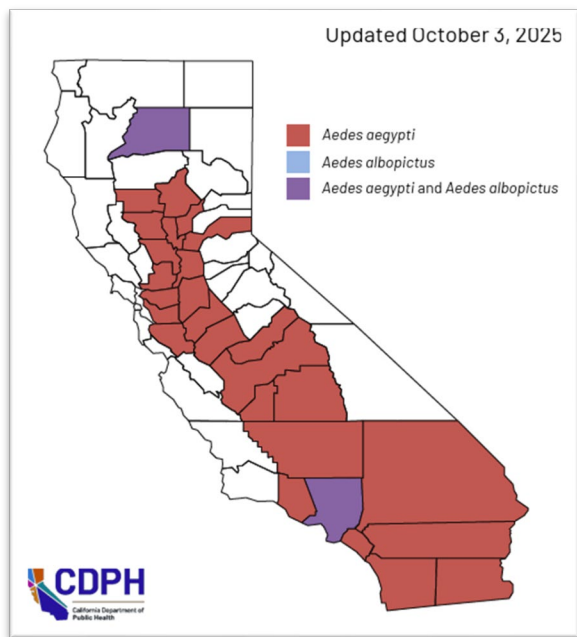
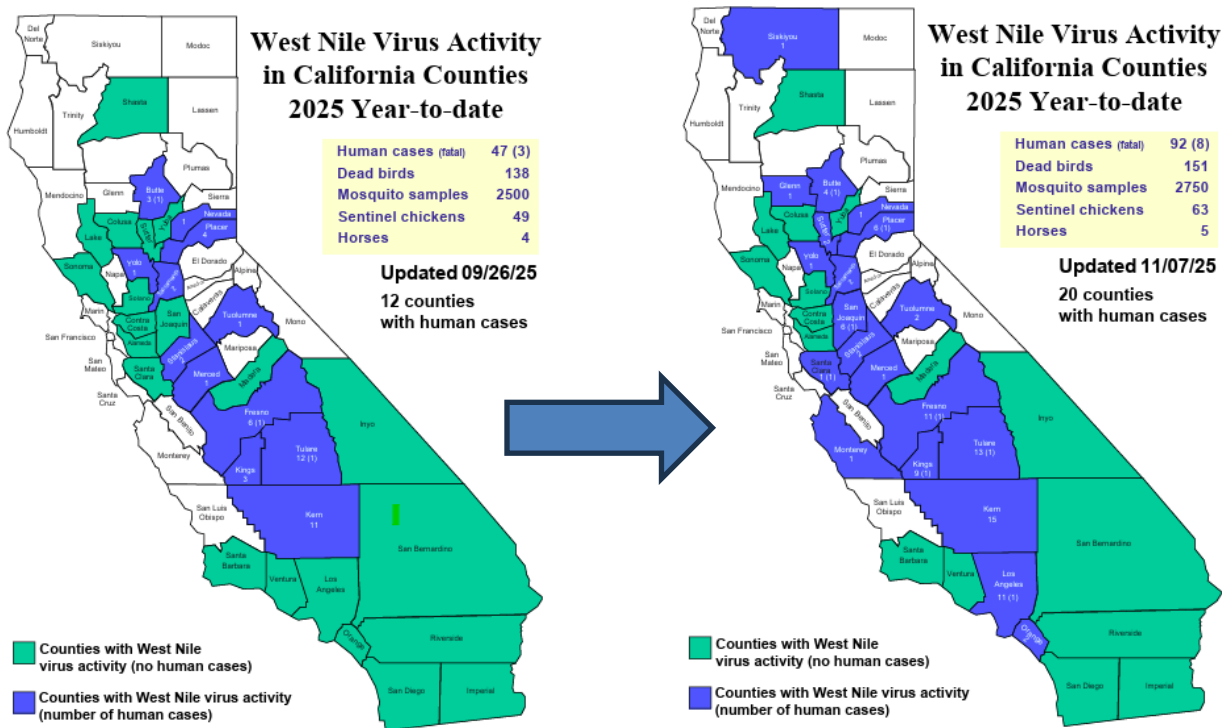
Santa Barbara County Vector-borne Disease Surveillance

In August, a horse in the Buellton area was ill and tested positive for West Nile virus (WNV). The horse was not up to date with its yearly booster vaccinations. Fortunately, it survived and is recovering from the illness. The District set gravid and EVS traps in the vicinity of where the horse is stabled, and the mosquitoes caught tested negative for WNV, Western equine encephalitis virus (WEE), and St. Louis encephalitis virus (SLE).

Two dead birds were reported to the WNV hotline in October, but both had been dead too long for testing.

WEE and SLE have never been documented in the County.

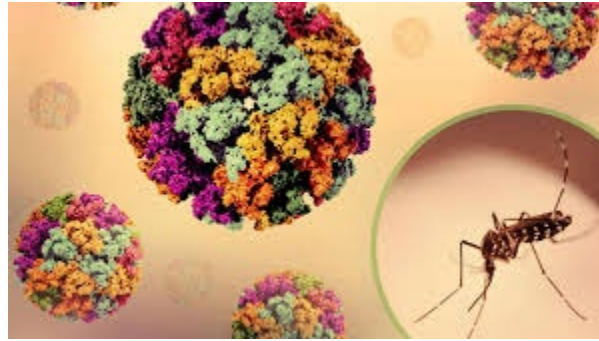
California Vector-borne Disease Surveillance: Change in WNV activity from October to November



Update on Invasive *Aedes* Mosquito in California

No invasive *Aedes* species have been detected in Santa Barbara County since May 2021. *Aedes aegypti* is found in 28 California counties and *Aedes albopictus* is found in two.

In 2025, there have been 7 locally-transmitted cases of dengue virus in California (five of them located in the City of La Puente, Los Angeles County). Non-native *Aedes* mosquitoes, capable of vectoring dengue, Zika, and chikungunya viruses, are common in the Greater Los Angeles area. One mosquito sample collected in Greater L.A. has also tested positive for dengue virus. In 2024, there were 18 locally-transmitted dengue cases. As of November 1, 2025, there have been 138 travel-related human dengue cases and two cases of Zika virus in California. There has been one travel-related case of dengue virus in Santa Barbara County. There have been 10 travel-related cases of chikungunya virus in California, including one in Santa Barbara County.



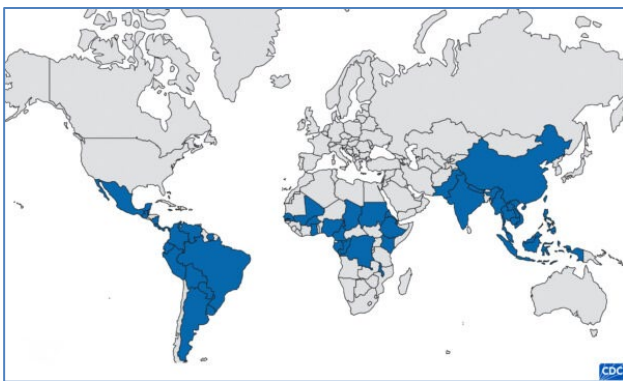
MedPage Today

Chikungunya Virus CHIKV

Chikungunya virus is a mosquito-borne virus native to Africa, discovered in 1953. It has periodically spread to Asia, and, in 2013, the virus became established in South and Central America. *Aedes aegypti* and *Aedes albopictus* mosquitoes are the primary vectors. Non-human primates can serve as a reservoir for the Chikungunya virus.

The African name means “bent over in pain” in the Tanzanian language of Makonde. Symptoms, which begin 3-8 days after a bite from an infected *Aedes* mosquito, include sudden fever, joint aches, muscle aches, swelling, headache, nausea, and rash. The disease is so similar to the disease caused by dengue virus that many outbreaks and cases between 1789 and 1953 were attributed to dengue. Patients sometimes have joint pain for months after infection. Fortunately, the case fatality rate is only 0.1 percent. There is no specific medical treatment, but there is a vaccine that is recommended for travelers to elevated-risk areas of the world.

In 2013 and 2014 there were 13 locally-acquired cases of chikungunya in Texas and Florida; from 2013 to 2019 there were over 5000 cases in Puerto Rico and other U.S. territories. This year, a 60-year-old woman who was living on Long Island, New York, and hadn't travelled, was diagnosed with chikungunya. She is recovering with medication to reduce her joint pain. Infected mosquitoes have not been found in New York.



Regions chikungunya is present



@heshdesilva

Chikungunya rash