



**MOSQUITO and VECTOR MANAGEMENT DISTRICT  
of SANTA BARBARA COUNTY**

**DISEASE SURVEILLANCE REPORT**

**July 2021**

**Live Mosquito-Borne Virus Surveillance**

<b>Location</b>	<b>Date</b>	<b>Number of Mosquitoes</b>	<b>Type of Trap</b>	<b># of Traps</b>	<b>Mosquitoes per Trap Night</b>	<b>Pools Submitted</b>	<b>WSW Virus Test Result</b>
West side SB area 93101	7/1-7/14	3	BGS2	2	0.08	0	
North Hope Ave area 93110	7/1-7/14	3	BGS2	3	0.08	0	
Orella St. 93105	7/1-7/14	0	BGS1	1	0	0	
MVMD SumInd.	7/1-7/14	4	BGS1	1	0.3	0	
Alston, 93108	6/29-7/8	1	BGS2	1	0.1	0	
Oceano, SLO	7/1-7/2	633	EVS,BGP	9	70.3	13	Negative
Chumash Park, Pismo Beach,SLO	7/1-7/2	52	EVS	2	26	3	Negative
Pismo Creek, SLO	7/1-7/2	41	BGP	1	41	1	Negative
Evergreen Park, 93117	7/6-7/9	84	Gravid	3		2	Negative
Evergreen Park	7/8-7/9	27	EVS	6	4.5	0	
Lake Los Carneros	7/12-7/15	109	Gravid	2	18.2	3	Negative
Lake Los Carneros	7/14-7/15	4	BGP	1	4	0	
Lake Los Carneros	7/14-7/15	14	EVS	7	2	1	Negative
North Hope area	7/19-7/26	100	Gravid	3	4.8	2	Negative
Santa Ynez Park	7/21-7/22	17	EVS	4	4.25	2	Negative
Solvang Sanitary Dist, Santa Ynez River	7/21-7/22	10	EVS	4	2.5	1	Negative
Alamo Pintado X Hwy 246	7/21/7/22	23	EVS	4	5.75	1	Negative
Carpinteria Creek	7/29-7/30	18	EVS	7	2.6	1	Pending
Carpinteria Creek	7/28-8/4	72	Gravid	3	3.4	3	Pending
West side SB area 93101	7/15-7/30	4	BGS2	2	0.15	0	
North Hope area	7/15-7/30	1	BGS2	4	0.02	0	
Orella St. 93105	7/15-7/30	0	BGS1	1	0	0	
MVMD SumInd.	7/15-7/30	0	BGS1	1	0	0	

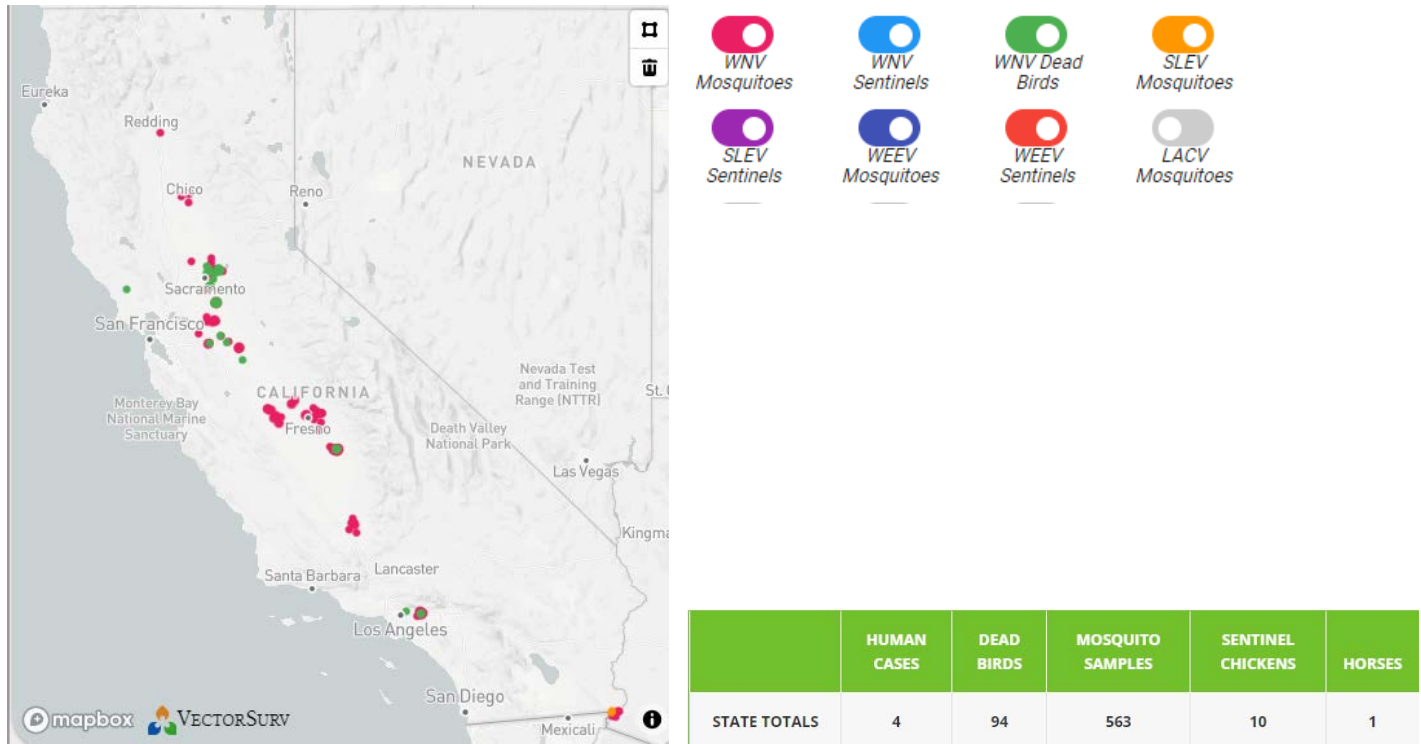
BGS2=Biogents Sentinel 2  
BGP=Biogents Pro

EVS=encephalitis surveillance trap (CO<sup>2</sup>)

WSW=WNV, SLEV, AND WEE

## California Arbovirus Bulletin

The map below, provided by the California Department of Public Health, Vector Borne Disease Section, shows the incidence of West Nile virus (WNV), Western equine encephalitis (WEE), and St. Louis encephalitis in mosquitoes (SLE), dead birds, and sentinel chickens in 2021. In California, there were four human cases of WNV infection in July, including a fatal case in San Luis Obispo County. The victim likely contracted the virus in Visalia, California, however.



### Arbovirus Activity in Santa Barbara County

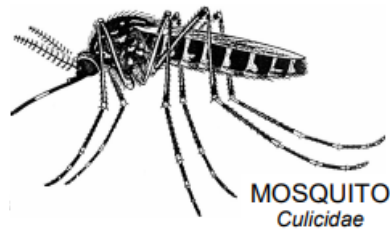
Last month, one dead bird from Santa Barbara County was tested for West Nile virus, and the results were negative. Two other birds were reported but not tested. Twenty-five mosquito pools from seven sites tested negative for WNV, SLE, and WEE.

The District currently maintains four sentinel chicken flocks in Santa Barbara County located at the Goleta Sanitary District, Mission Hills Community Services District, the Solvang City Wastewater Treatment Plant, and the U.S. Forest Service Fire Station in Carpinteria. Blood samples were taken the week of July 6 and the week of July 19; all results were negative.

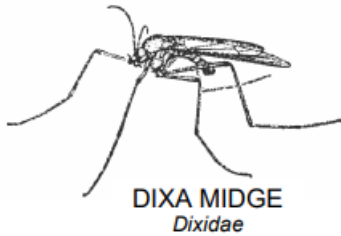
### Zika Virus and Invasive *Aedes* Mosquito Update

No *Aedes aegypti* mosquitoes were collected in Santa Barbara County in July. *Aedes aegypti* has recently been recorded for the first time in Ojai, California, in Ventura County.

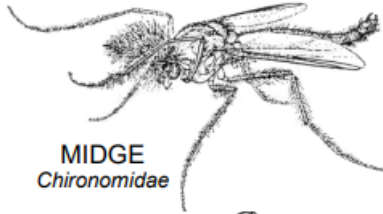
There have been no Zika virus infections reported in California in 2021 to date.



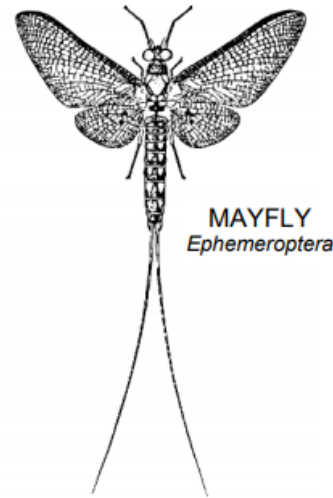
MOSQUITO  
*Culicidae*



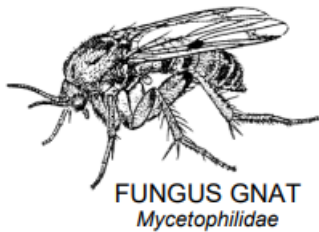
DIXIA MIDGE  
*Dixidae*



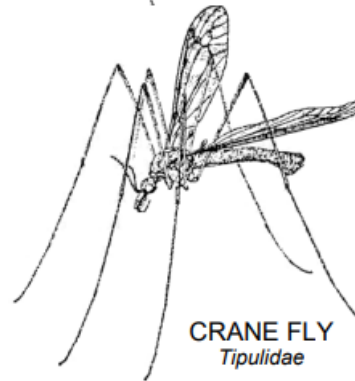
MIDGE  
*Chironomidae*



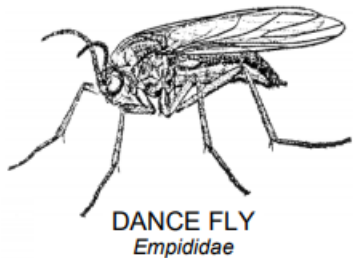
MAYFLY  
*Ephemeroptera*



FUNGUS GNAT  
*Mycetophilidae*



CRANE FLY  
*Tipulidae*



DANCE FLY  
*Empididae*



GALL MIDGE  
*Cecidomyiidae*



OWL MIDGE / MOTH FLY  
*Psychodidae*

### Mosquito-Like Insects

Non-biting insects that resemble mosquitoes are present in Santa Barbara County at various times and places throughout the year. Most types are attracted to lights at night. They resemble mosquitoes so closely that they are frequently reported to the District as being mosquitoes, even if there has been no bite or attempt to bite. Mosquitoes do not “swarm” as many of these other insects do. Also, on surfaces, mosquitoes can take slow steps, but they do not run. Under magnification, these non-biting insects are easily distinguished from mosquitoes by the absence of the proboscis (long, needle-like mouth parts).